



EXTRA SPACE STORAGE

SANTEE

10835 WOODSIDE AVENUE
SANTEE, CALIFORNIA 92071

ELEVATIONS

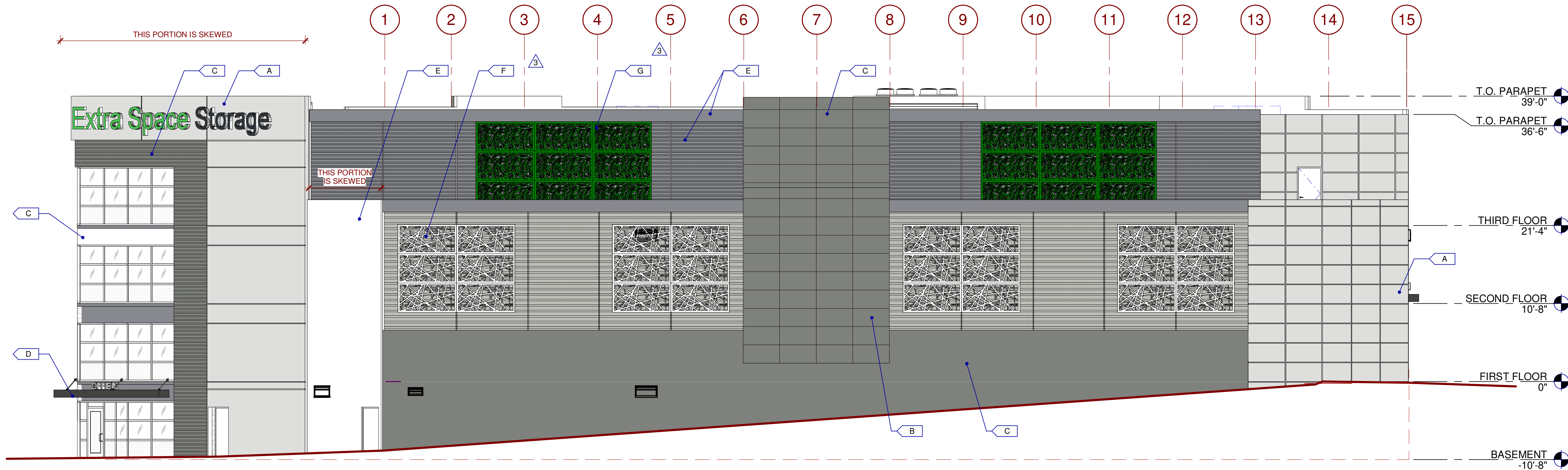
DATE 2023-11-22
PLANNING REVISION 3
REMARKS

P/APP: Approver
DRAWN BY: Author
JOB NO.: SDG23-4007-00

SHEET

A30

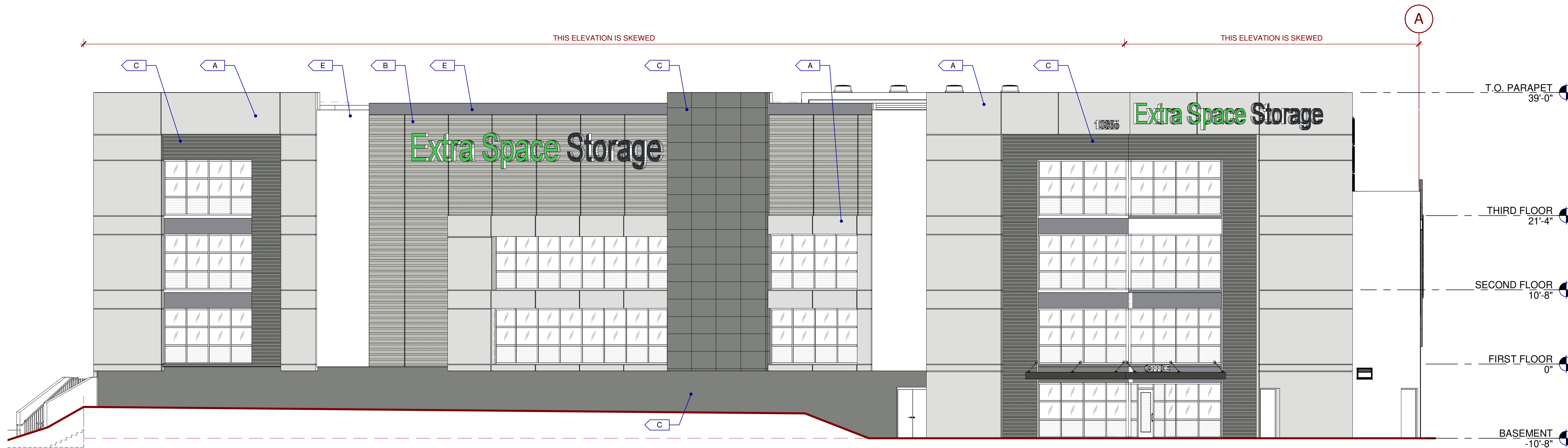
10/27/2023 - SD SET



SOUTH EXTERIOR ELEVATIONS

SCALE: 1/8" = 1'-0"

1



WEST EXTERIOR ELEVATION

SCALE: 1/8" = 1'-0"

2

MATERIALS:

CORRUGATED METAL PANEL

GLASS:

VISION GLASS

TEMPERED GLASS

ALL GLASS USED ON THE ENVELOPE OF THE BUILDING TO BE:
XXXXXXX
U FACTOR = 0.28 AND SHGC = 0.28
GLASS WIND LOAD RESISTANCE CALCULATIONS ARE UNDER SEPARATE PERMIT

COLORS:

PROVIDE 6" WIDE PAINT COLOR MOCK-UP FULL HEIGHT OF BUILDING FOR OWNER/ARCHITECT REVIEW.

A BASE COLOR: NEBULOUS WHITE

B SECONDARY COLOR: ARGOS

C ACCENT COLOR: CITYSCAPE

D ACCENT COLOR: IRON ORE

E ACCENT COLOR: SILVERSMITH

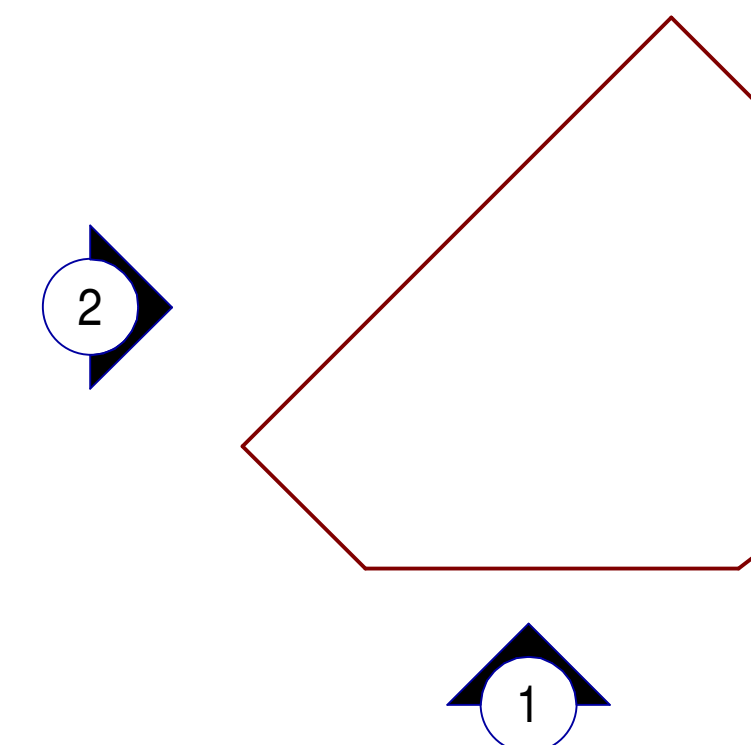
F DECORATIVE METAL SCREEN

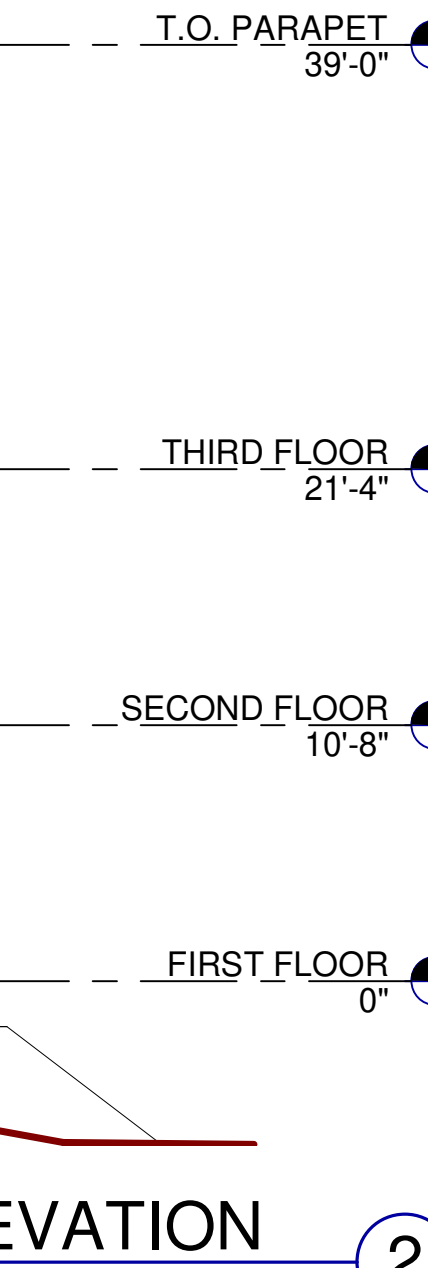
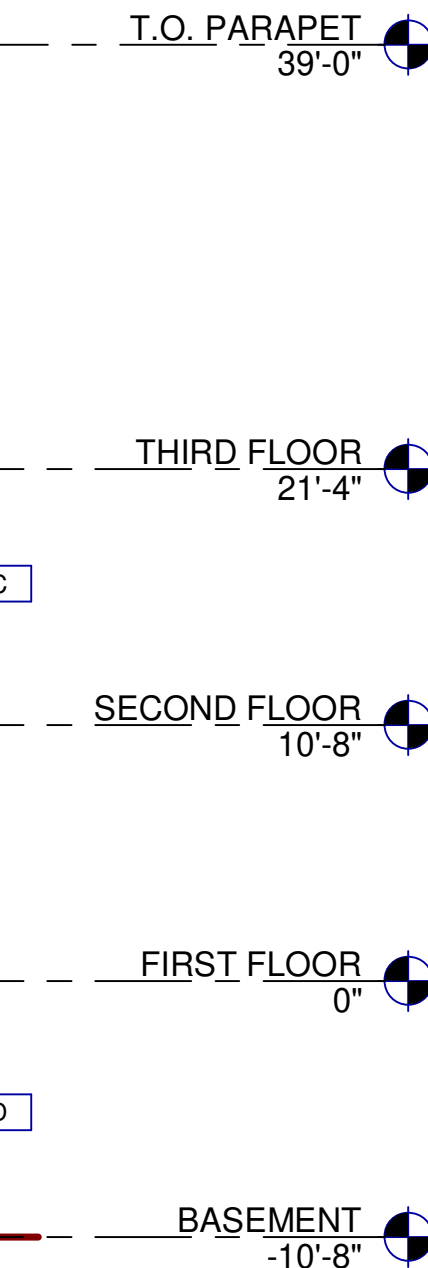
G DECORATIVE GREEN SCREEN

KEYNOTES:

SEE SHEET A010 FOR GENERAL NOTES

KEY PLAN





CORRUGATED METAL PANEL

VISION GLASS

TEMPERED GLASS

| | |
|---|----------------------------|
| A | BASE COLOR: NEBULOUS WHITE |
| B | SECONDARY COLOR: ARGOS |
| C | ACCENT COLOR: CITYSCAPE |
| D | ACCENT COLOR: IRON ORE |
| E | ACCENT COLOR: SILVERSMITH |
| F | DECORATIVE METAL SCREEN |
| G | DECORATIVE GREEN SCREEN |

SEE SHEET A010 FOR GENERAL NOTES



EXTRA SPACE STORAGE

SANTEE

10835 WOODSIDE AVENUE
SANTEE, CALIFORNIA 92071

ELEVATIONS

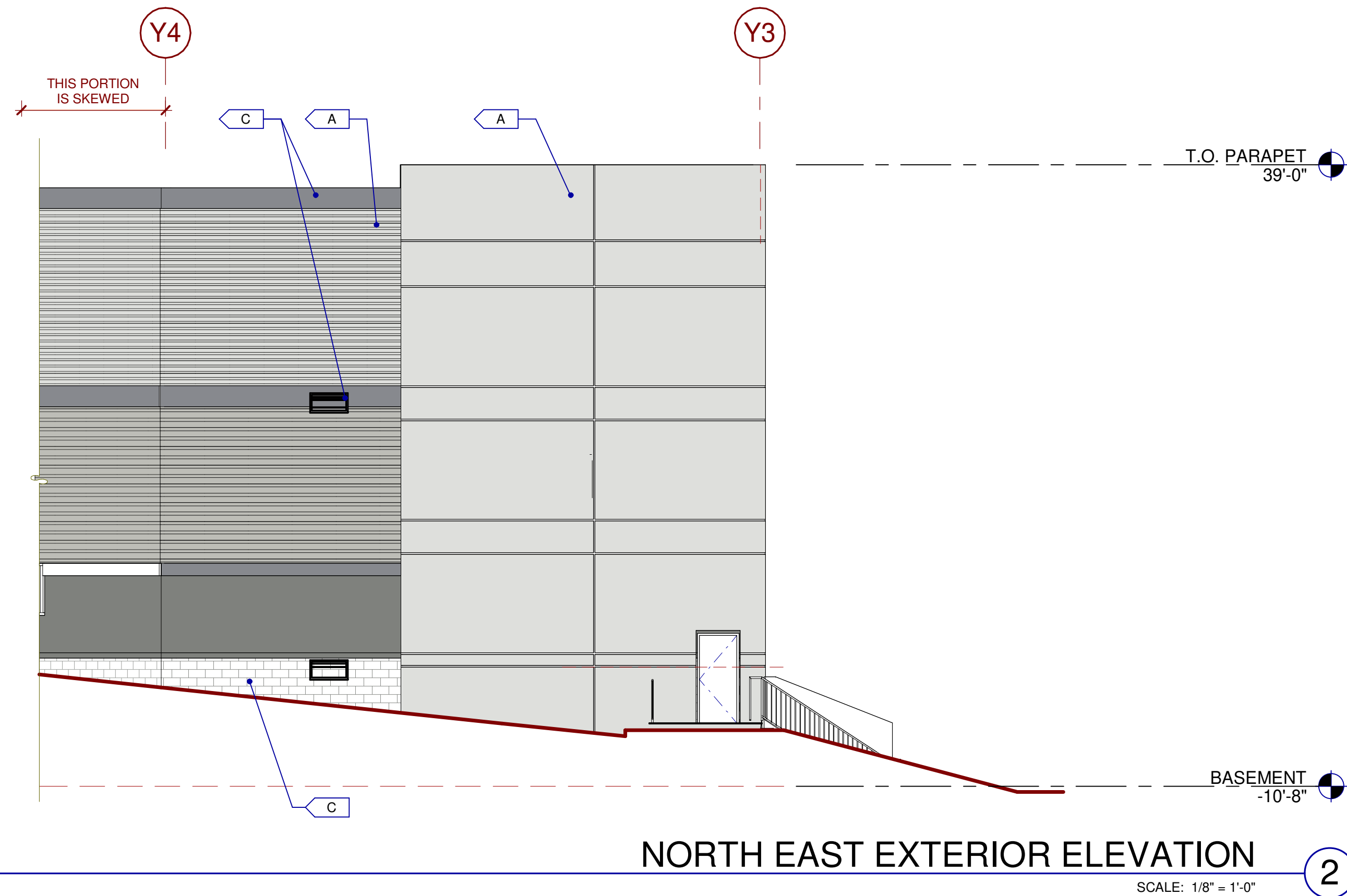
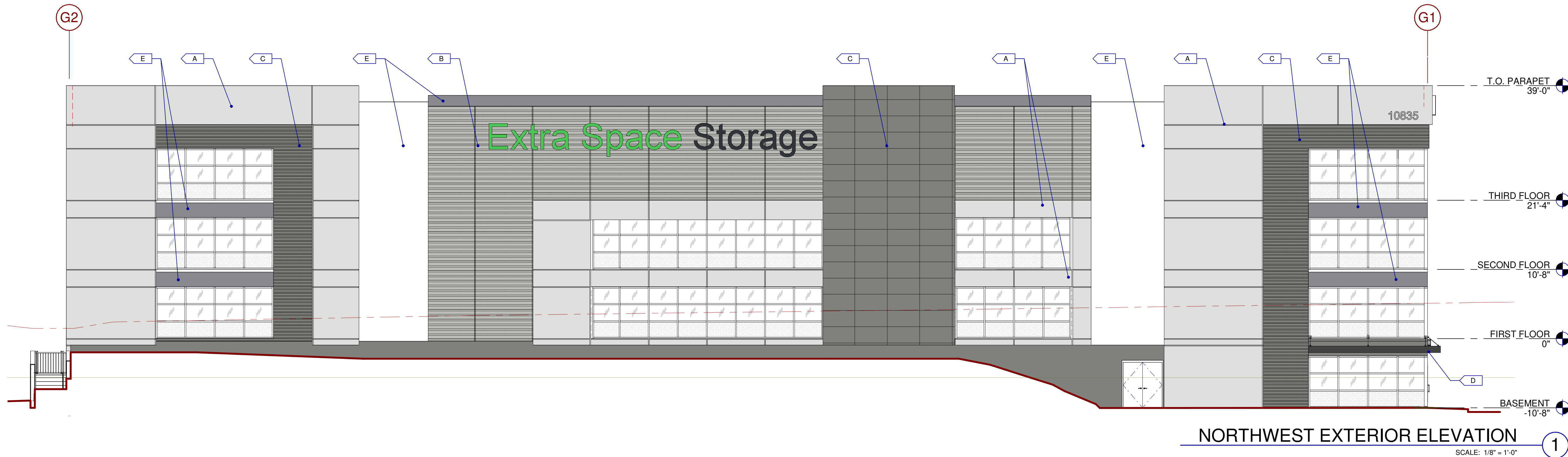
| DATE | REMARKS |
|------|---------|
| | |
| | |
| | |
| | |
| | |
| | |
| | |
| | |
| | |

| | |
|-----------|---------------|
| P&PM: | Approver |
| DRAWN BY: | Author |
| JOB NO.: | SDG23-4007-00 |

SHEET

A32

10/27/2023 9:42:35 AM



MATERIALS:

- CORRUGATED METAL PANEL
- VISION GLASS
- TEMPERED GLASS

ALL GLASS USED ON THE ENVELOPE OF THE BUILDING TO BE:
XXXXXXX
U FACTOR = 0.28 AND SHGC = 0.28
GLASS WIND LOAD RESISTANCE CALCULATIONS ARE UNDER SEPARATE PERMIT

COLORS:

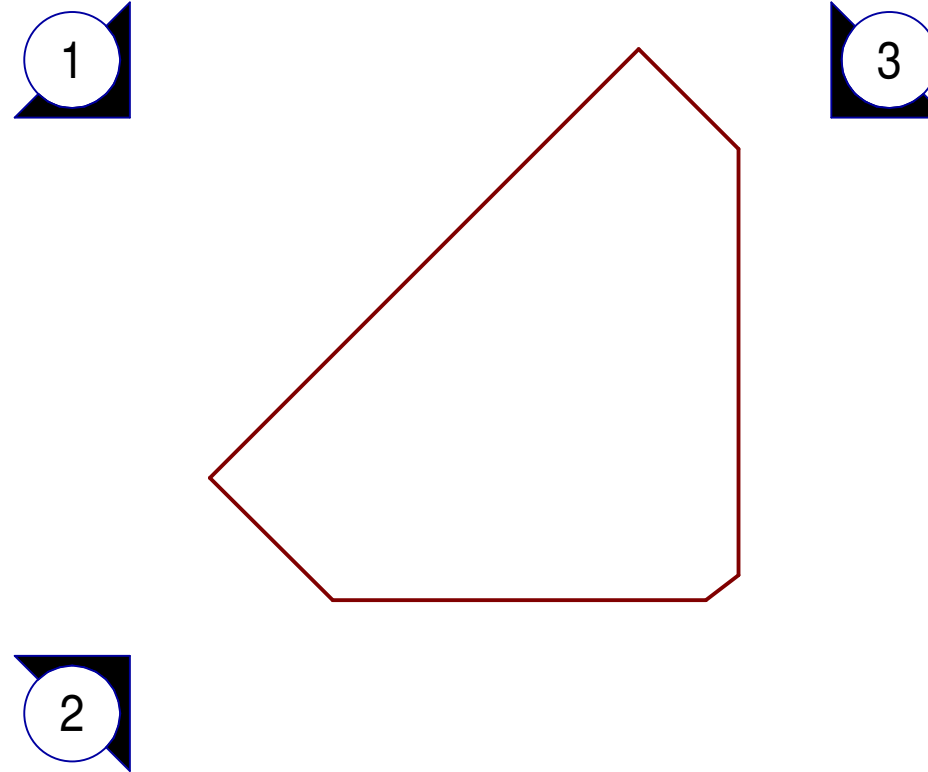
PROVIDE 6'-0" WIDE PAINT COLOR MOCK-UP FULL HEIGHT OF BUILDING FOR OWNER/ARCHITECT REVIEW.

- BASE COLOR: NEBULOUS WHITE
- SECONDARY COLOR: ARGOS
- ACCENT COLOR: CITYSCAPE
- ACCENT COLOR: IRON ORE
- ACCENT COLOR: SILVERSMITH
- DECORATIVE METAL SCREEN
- DECORATIVE GREEN SCREEN

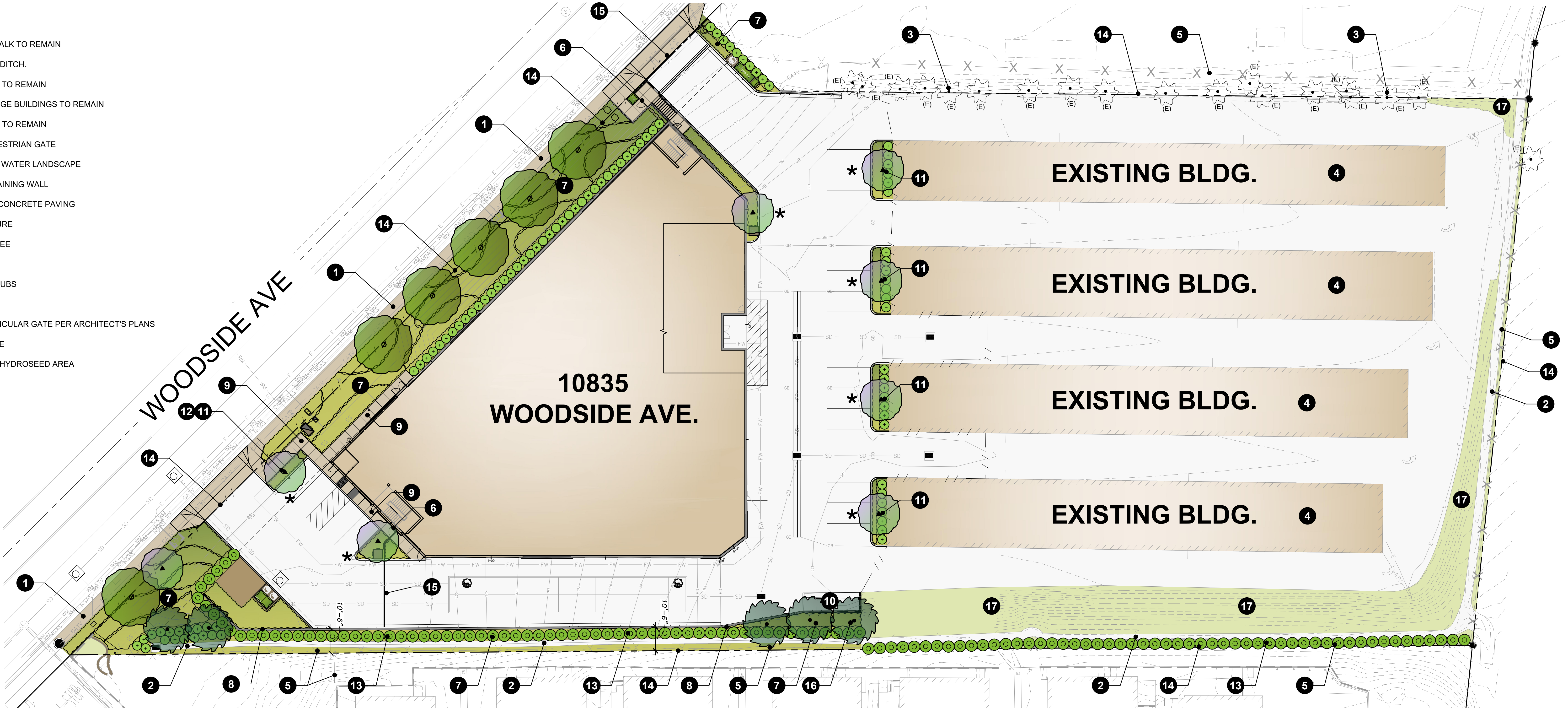
KEYNOTES:

SEE SHEET A010 FOR GENERAL NOTES

KEY PLAN



- LEGEND
- 1 EXISTING SIDEWALK TO REMAIN
 - 2 EXISTING BROW DITCH.
 - 3 EXISTING TREES TO REMAIN
 - 4 EXISTING STORAGE BUILDINGS TO REMAIN
 - 5 EXISTING FENCE TO REMAIN
 - 6 PROPOSED PEDESTRIAN GATE
 - 7 PROPOSED LOW WATER LANDSCAPE
 - 8 PROPOSED RETAINING WALL
 - 9 NATURAL GRAY CONCRETE PAVING
 - 10 TRASH ENCLOSURE
 - 11 PARKING LOT TREE
 - 12 ACCENT TREE
 - 13 SCREENING SHRUBS
 - 14 PROPERTY LINE
 - 15 PROPOSED VEHICULAR GATE PER ARCHITECT'S PLANS
 - 16 SCREENING TREE
 - 17 NON-IRRIGATED HYDROSEED AREA



PROPOSED PLANT PALETTE

| TREES | SYMBOL | BOTANICAL NAME | COMMON NAME | SIZE / FORM | HT. X SPRD. X CAL. (MIN.) | WATER USE | DESCRIPTION / MAX. MATURE SIZE |
|-------|--------|----------------------|----------------|----------------|---------------------------|-----------|--------------------------------|
| | | LAGERSTROEMIA INDICA | CRAPE MYRTLE | 24" BOX STD. | 10'H X 4'W X 1-1/4" CAL. | M | ACCENT TREE (25'H X 25'W) |
| | | PINUS ELДАРICA | MONDELL PINE | 24" BOX STD. | 10'H X 5'W X 1-1/4" CAL. | L | SCREENING TREE (80'H X 25'W) |
| | | RHUS LANCEA | AFRICAN SUMMAC | 24" BOX / STD. | 10'H X 4'W X 1-1/4" CAL. | L | STREET TREE (30'H X 35'W) |

PROPOSED PLANT PALETTE

| SHRUBS, GRASSES, & GROUNDCOVERS | | | | | | | |
|---|--|------------------------------|----------------------|-------------------------|----------|-----------------|-----------------------|
| SYMBOL | KEY | BOTANICAL NAME | COMMON NAME | SIZE | SPACING | WATER USE | DESCRIPTION |
|  | CAR DIV | CAREX DIVULSA | BERKELEY SEDGE | 1 GAL. | 24" O.C. | L | ORNAMENTAL GRASS |
| | DIA LR | DIANELLA 'LITTLE REV' | LITTLE REV FLAX LILY | 1 GAL. | 24" O.C. | L | UPRIGHT ACCENT |
| | HES BL | HESPERALOE 'BRAKELIGHTS' | BRAKELIGHTS YUCCA | 5 GAL. | 36" O.C. | VL | UPRIGHT ACCENT |
| | JUN PAT | JUNCUS PATENS | CALIFORNIA GRAY RUSH | 1 GAL. | 24" O.C. | L | MODULAR WETLAND PLANT |
| | LAN NG | LANTANA 'NEW GOLD' | NEW GOLD LANTANA | 5 GAL. | 36" O.C. | VL | FLOWERING LOW SHRUB |
|  | OLE MON | OLEA 'MONTRA' | LITTLE OLLIE | 5 GAL. | 48" O.C. | L | LARGE SHRUB |
|  | POD GRA | PODOCARPUS GRACILIOR | FERN PINE | 15 GAL. | 60" O.C. | M | LARGE SCREENING HEDGE |
|  | RHA CLA | RHAPHIOLEPIS INDICA 'CLARA' | INDIAN HAWTHORN | 5 GAL. | 36" O.C. | L | EVERGREEN SHRUB |
| | SAL GRE | SALVIA GREGGII | AUTUMN SAGE | 5 GAL. | 36" O.C. | L | FLOWERING SHRUB |
| | WES WG | WESTRINGIA 'WYNYABBIE GEM' | COAST ROSEMARY | 5 GAL. | 36" O.C. | L | EVERGREEN HEDGE |
| NON-IRRIGATED HYDROSEED MIX | | | | | | | |
|  | S & S SEEDS - BASIC NATIVE EROSION CONTROL MIX | | | HYDROSEED LBS. PER ACRE | | NATIVE SEED MIX | |
| | HYD MIX | BROMUS CARINATUS 'CUCAMONGA' | CUCAMONGA BROME | 20 | | L | |
| | | FESTUCA MICROSTACHYS | SMALL FESCUE | 8 | | L | |
| | | TRIFOLIUM CILIATUM | FOOTHILL CLOVER | 4 | | L | |

WATER USE KEY:
VL = VERY LOW WATER USE, L = LOW WATER USE, M = MODERATE WATER USE, H = HIGH WATER USE. WATER USE STATED IS PER 'WATER USE CLASSIFICATION OF LANDSCAPE SPECIES' (ALSO REFERRED TO AS WUCOLS IV) FOR THE CITY OF SANTEE.

EXISTING PLANT SCHEDULE

| TREES | SYMBOL | BOTANICAL NAME | COMMON NAME | COMMENTS |
|-------|--------|----------------------|------------------|----------|
| | | WASHINGTONIA ROBUSTA | MEXICAN FAN PALM | -- |

NOTE: THE LETTER (E) NEXT TO A TREE SYMBOL INDICATES AN EXISTING TREE TO BE PROTECTED IN PLACE. THE LETTER (R) INDICATES AN EXISTING TREE TO BE REMOVED FROM SITE.

STATEMENT OF COMPLIANCE
I HAVE COMPLIED WITH THE CRITERIA OF THE ORDINANCE AND APPLIED THEM FOR THE EFFICIENT USE OF WATER IN THE LANDSCAPE DESIGN PLAN.
TRAVIS EBBERT, LANDSCAPE ARCHITECT RLA #4624 01-29-2025 DATE

| Appendix A Water Efficient Landscape Worksheet | | | | | | | | | |
|--|-------------------|---------------------|------------------------------|--------------|--------------------------|-----------------|---|--|--|
| Reference Evapotranspiration (ET ₀) | | 51.1 | Project Type | | | Non-Residential | 0.45 | | |
| Hydrozone # Planting Description * | Plant Factor (PF) | Irrigation Method * | Irrigation Efficiency (IE) % | ETAF (PF/IE) | Landscape Area (Sq. Ft.) | ETAF x Area | Estimated Total Water Use (ETWU) ¹ | | |
| Regular Landscape Areas | | | | | | | | | |
| 1- Shrub Drip (LOW) | 0.2 | Drip | 0.81 | 0.25 | 10114 | 2497 | 79119 | | |
| 2- Shrub Drip (MOD) | 0.6 | Drip | 0.81 | 0.74 | 2810 | 2081 | 65945 | | |
| 2- Tree Bubbler (MOD) | 0.6 | Bubbler | 0.77 | 0.78 | 64 | 50 | 1580 | | |
| 3- Tree Bubbler (LOW) | 0.2 | Bubbler | 0.77 | 0.26 | 104 | 27 | 856 | | |
| Totals | | | | | 13092 | 4656 | 147500 | | |
| Special Landscape Areas | | | | | | | | | |
| SLA-1 | N/A | | 1 | 0 | 0 | 0 | 0 | | |
| Totals | | | | | 0 | 0 | 0 | | |
| ETWU Total Gallons * | | | | | | 147,500 | | | |
| Maximum Allowed Water Allowance (MAWA) Gallons * | | | | | | 186,651 | | | |
| * Hydrozone# / Planting Description e.g. 1) Drip Low water use planting 2) Spray Moderate water use planting 3) Tree Bubbler Moderate water use | | | | | | | | | |
| * Irrigation Method 1) Overhead Spray 2) Drip 3) Rotary 4) Rotor 5) Bubbler | | | | | | | | | |
| * Irrigation Efficiency 1) 0.73 for Spray Head 2) 0.81 for Drip 3) 0.73 Rotary 4) 0.73 Rotor 5) 0.77 Bubbler | | | | | | | | | |
| * ETWU (Annual Gallons Required) = Eto x 0.62 x ETAF x Area Where 0.62 is a conversion factor to change acre-inches per acre per year to gallons per square foot per year | | | | | | | | | |
| * MAWA (Annual Gallons Allowed) = (Eto)(0.62) (ETAF x LA) + ((1-ETAF) x SLA) Where 0.62 is a conversion factor to change acre-inches per acre per year to gallons per square foot per year. LA is the total regular landscape area in square feet, SLA is the total special landscape area in square feet, and ETAF is 0.55 for residential areas and 0.45 for non-residential areas. | | | | | | | | | |
| ETAF Calculations | | | | | | | | | |
| Regular Landscape Areas | | | | | | | | | |
| Total ETAF x Area | | | | | 4656 | | | | |
| Total Area | | | | | 13092 | | | | |
| Average ETAF | | | | | 0.36 | | | | |
| All Landscape Areas | | | | | | | | | |
| Total ETAF x Area | | | | | 4629 | (B+D) | | | |
| Total Area | | | | | 12988 | (A+C) | | | |
| Average ETAF | | | | | 0.36 | (B+D) ÷ (A+C) | | | |



Schematic Design

PRELIMINARY LANDSCAPE PLAN

10835 Woodside Ave,
Santee, CA 92071

WARE MALCOMB

LAX21-0176-00
01.29.2025
PLANNING SUBMITTAL

SHEET
L1.1

