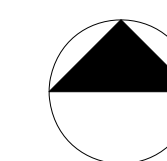
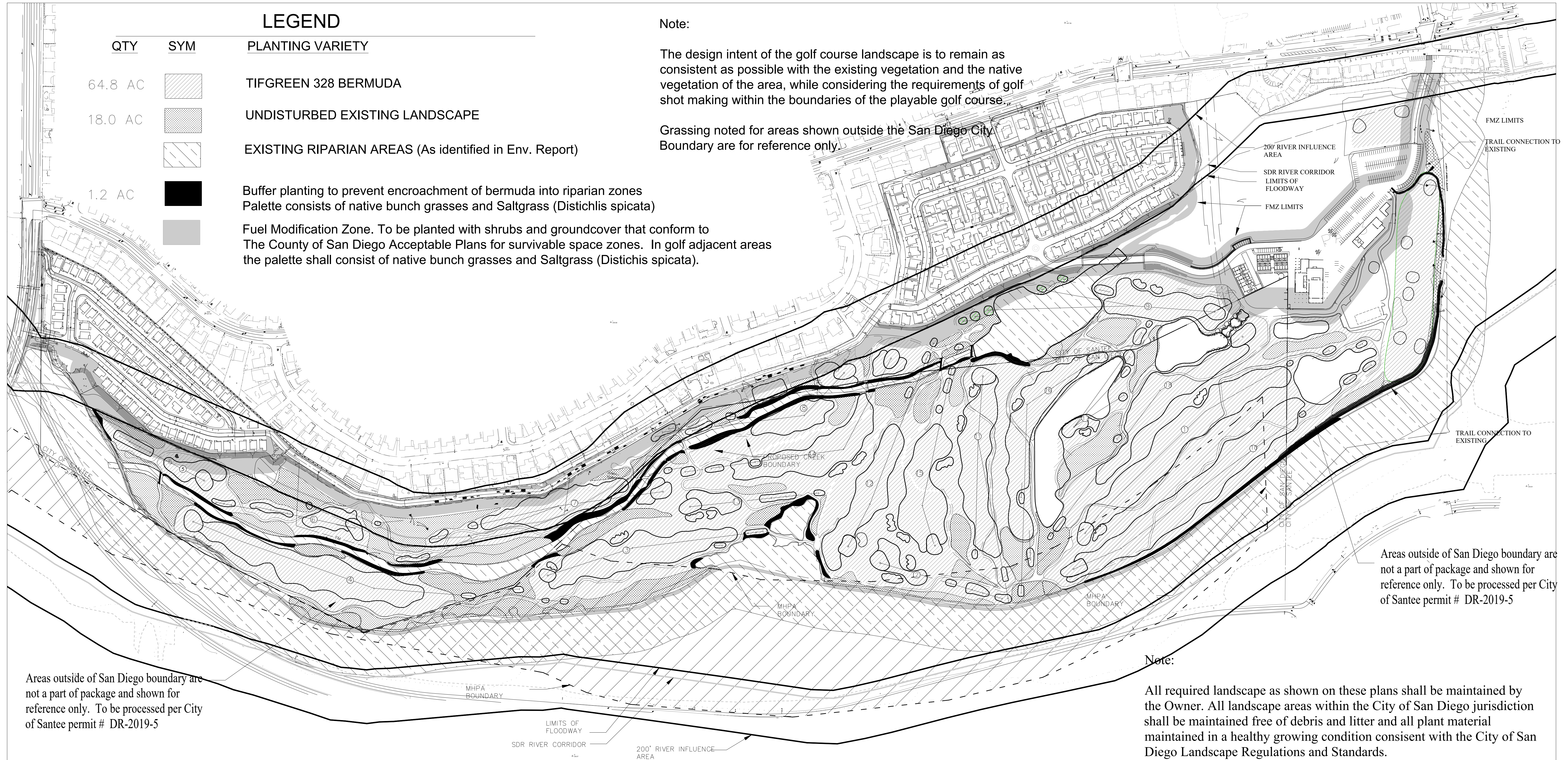




# CARLTON OAKS COUNTRY CLUB & RESORT

## 18 HOLE CHAMPIONSHIP GOLF COURSE







# CARLTON OAKS COUNTRY CLUB & RESORT

## 18 HOLE CHAMPIONSHIP GOLF COURSE

### Note:

The design intent of the golf course tree selection is to remain as consistent as possible with the existing vegetation and the native vegetation of the area, while considering the requirements of golf shot making and safety within the boundaries of the playable golf course.

Tree planting noted for areas shown outside the City of San Diego.

Boundaries are for reference only.

### LEGEND

QTY	SYM	TREE VARIETY
9		EUCALYPTUS SIDEROXYLON- 24" BOX
2		PINUS PINEA- 24" BOX
49		PINUS CANARIENSIS- 24" BOX

EXISTING RIPARIAN AREAS (As identified in Env. Report)

FUEL MODIFICATION ZONE



Areas outside of San Diego boundary are not a part of package and shown for reference only. To be processed per City of Santee permit # DR-2019-5

Areas outside of San Diego boundary are not a part of package and shown for reference only. To be processed per City of Santee permit # DR-2019-5

### Note:

All required landscape as shown on these plans shall be maintained by the Owner. All landscape areas within the City of San Diego jurisdiction shall be maintained free of debris and litter and all plant material maintained in a healthy growing condition consistent with the City of San Diego Landscape Regulations and Standards.

## TREE PLANTING PLAN

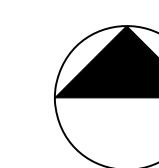


CARY BICKLER, INC.  
GOLF COURSE DESIGN

AMERICAN SOCIETY OF GOLF COURSE ARCHITECTS  
1220 Rosecrans Street, Suite 314  
San Diego, California 92106  
Phone: (619) 223-3240 \* E-mail: cb@bickler.com \* Web Site: www.bickler.com



43955 PORT MARIA ROAD  
BERMUDA DUNES, CALIFORNIA  
760.275.8700



200 SCALE  
FEBRUARY 2024

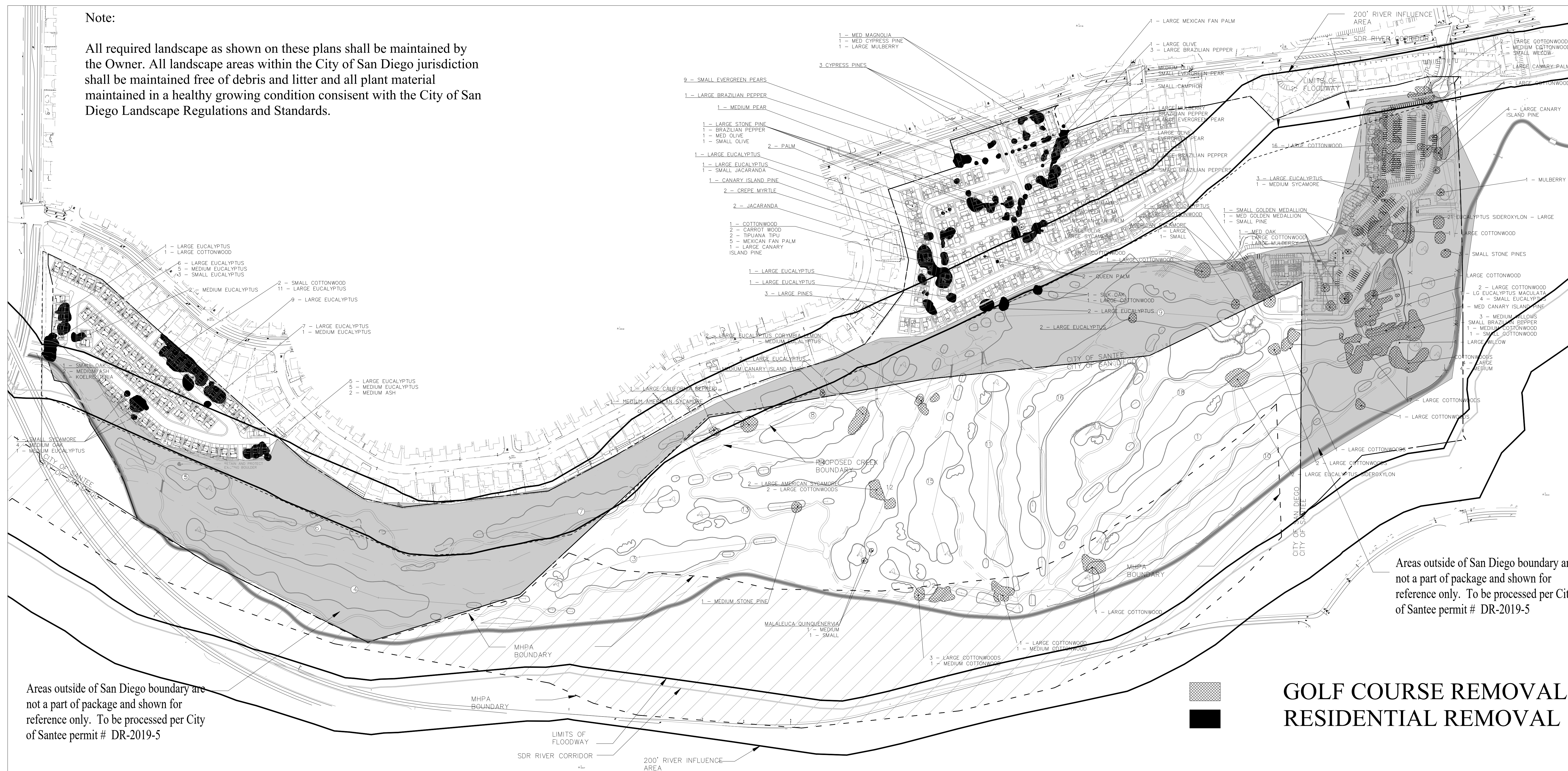






Note:

All required landscape as shown on these plans shall be maintained by the Owner. All landscape areas within the City of San Diego jurisdiction shall be maintained free of debris and litter and all plant material maintained in a healthy growing condition consistent with the City of San Diego Landscape Regulations and Standards.



Areas outside of San Diego boundary are not a part of package and shown for reference only. To be processed per City of Santee permit # DR-2019-5

# GOLF COURSE REMOVAL RESIDENTIAL REMOVAL

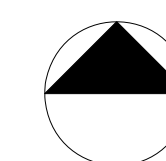


AMERICAN SOCIETY OF GOLF COURSE ARCHITECTS  
1220 Rosecrans Street, Suite 314  
San Diego, California 92106  
Phone: (619) 223-3240 \* E-mail: [cb@bickler.com](mailto:cb@bickler.com) \* Web Site: [www.bickler.com](http://www.bickler.com)



43955 PORT MARIA ROAD  
BERMUDA DUNES, CALIFORNIA  
760.275.8700

# TREE REMOVAL PLAN



200 SCALE  
FEBRUARY 2024

